



VENDITA USATA

princess yachts 30m

6 250 000 € TASSE ESCLUSE

## Descrizione

Step aboard the Princess 30M and immerse yourself in a world of opulence and comfort. The expansive interiors are thoughtfully designed to create a serene and luxurious ambiance. The main deck saloon, with her panoramic windows, floods the space with natural light, offering breathtaking views and a sense of openness. Plush furnishings, exquisite materials, and meticulous attention to detail ensure an atmosphere of refined elegance.

The Princess 30M can comfortably accommodate up to 8 guests in four lavish staterooms. The full-beam master suite, in the main deck, is a sanctuary of luxury, featuring a king-sized bed, a private study, and a spacious en-suite bathroom with premium fixtures. In the lower deck, the VIP cabin amidship offers similar opulence and space, while the two guest cabins, with their twin beds and en-suite facilities, ensure every guest experiences the utmost in comfort, one of them with convertible sliding beds provides flexibility for various guest arrangements, ensuring all guests are pampered with the finest amenities.

Underneath her luxurious exterior, the Princess 30M is a powerhouse of performance and engineering. Powered by twin MTU engines, this yacht delivers an exhilarating cruising speed, ensuring swift and smooth voyages. Advanced hull design and stabilization systems guarantee a stable and comfortable sail. The yacht's cutting-edge navigation and control systems provide seamless handling and peace of mind for both the captain and guests.

The Princess 30M offers an abundance of outdoor living spaces designed for relaxation and entertainment. The expansive flybridge is perfect for sunbathing,

## Specifiche

VINTAGE ▼

**2018**

LARGHEZZA

**7.05**

CAPACITÀ DEL CARBURANTE

**12228**

BAGNI

**1**

ORE MOTORE

**1820**

LUNGHEZZA

**23.98**

TIRANTE D'ACQUA/PESCAGGIO

**2.05**

CABINE

**4**

MARCA DEL MOTORE

**MTU V12 2000 M96L**

POTENZA

**2 X 1948 CV**

**Generale**

---

TIPO	COSTRUTTORE	MODELLO
Motobarca	princess yachts	30m

**Dimensioni / Prestazione**

---

PESO (T)	CAPACITÀ DEL SERBATOIO (L)	VELOCITÀ DI CROCIERA (ND)	VELOCITÀ MASSIMA (ND)
9999.99	12228	17	20

**Costruzione / disposizioni**

---

NUMERO DI CABINE	POSTI LETTO	BAGNI
4	8	1

**Meccanica**

---

MOTORE	NUMERO DI MOTORI POTENZA (CV)	ORE MOTORE	CARBURANTE
MTU V12 2000 M96L	2 x 1948	1820	Diesel
ELICA DI POPPA	ELICA DI PRUA		

**Elettricità / Aria condizionata**

---

BATTERIA DEL MOTORE	CARICABATTERIE	GENERATORE	ARIA CONDIZIONATA
---------------------	----------------	------------	-------------------

### **Attrezzatura di navigazione**

---

GPS	TRACCIANTE	RADAR	PILOTA AUTOMATICO
BUSSOLA DI NAVIGAZIONE	ECOSCANDAGLIO	ANCORA	FLYBRIDGE

### **Cucina / Lavanderia / Divertimento**

---

FORNO	CONGELATORE	FRIGO	TV
-------	-------------	-------	----

### **Attrezzatura di coperta**

---

DOCCIA DI COPERTA















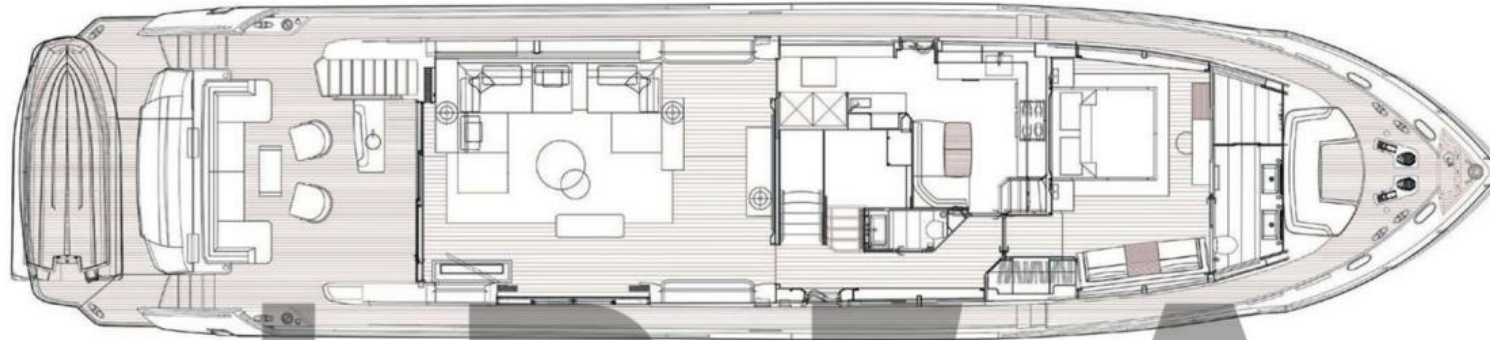






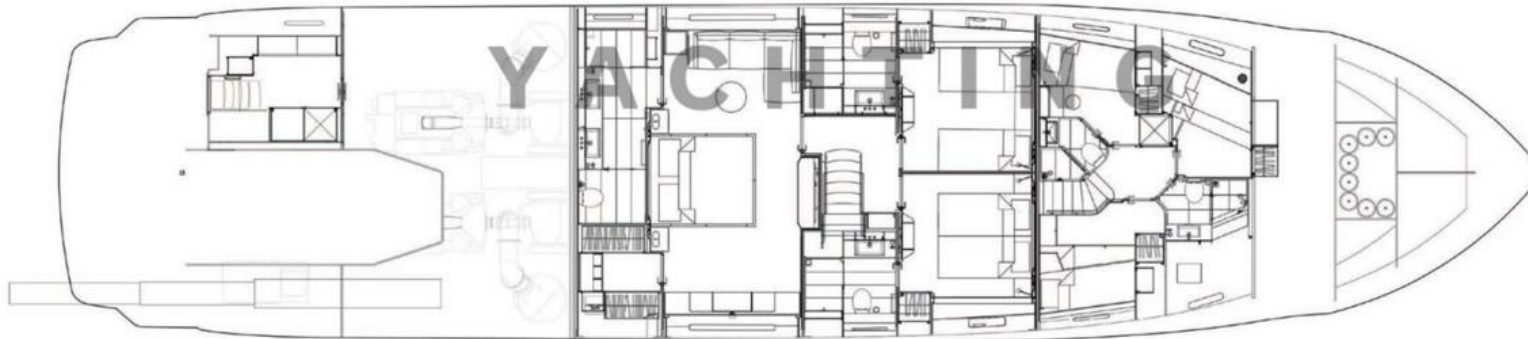
Profile and Flybridge





Main Deck

IDEA



Lower Deck

YACHTING