



VENDITA USATA

beneteau Swift Trawler 44

395 000 € IVA inclusa

Specifiche

VINTAGE ▼

2017

CAPACITÀ DEL CARBURANTE

1400

MARCA DEL MOTORE

Volvo

LUNGHEZZA

1388.00

PASSEGGERI

10

ORE MOTORE

960

LARGHEZZA

425.00

CABINE

2

POTENZA

2 X 300 CV

TIRANTE D'ACQUA/PESCAGGIO

105.00

BAGNI

2

Generale

TIPO	COSTRUTTORE	MODELLO	PASSEGGERI
Motobarca	beneteau	Swift Trawler 44	10
BANDIERA	LUOGO / VISIBILE A		
Pologne	Empuriabrava		

Dimensioni / Prestazione

CAPACITÀ DEL SERBATOIO
(L)
1400

Costruzione / disposizioni

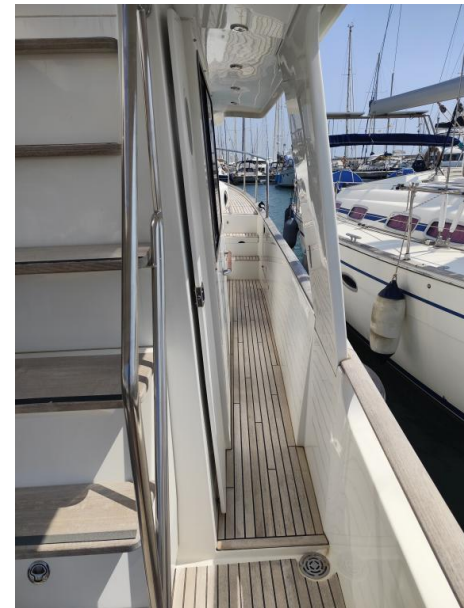
NUMERO DI CABINE	POSTI LETTO	BAGNI
2	4	2

Meccanica

MOTORE	NUMERO DI MOTORI POTENZA (CV)	ORE MOTORE	CARBURANTE
Volvo	2 x 300	960	Diesel













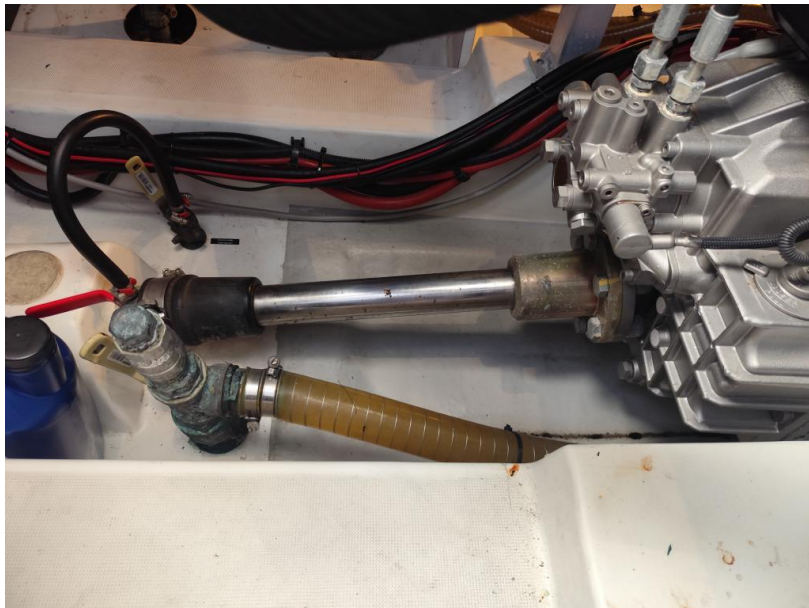
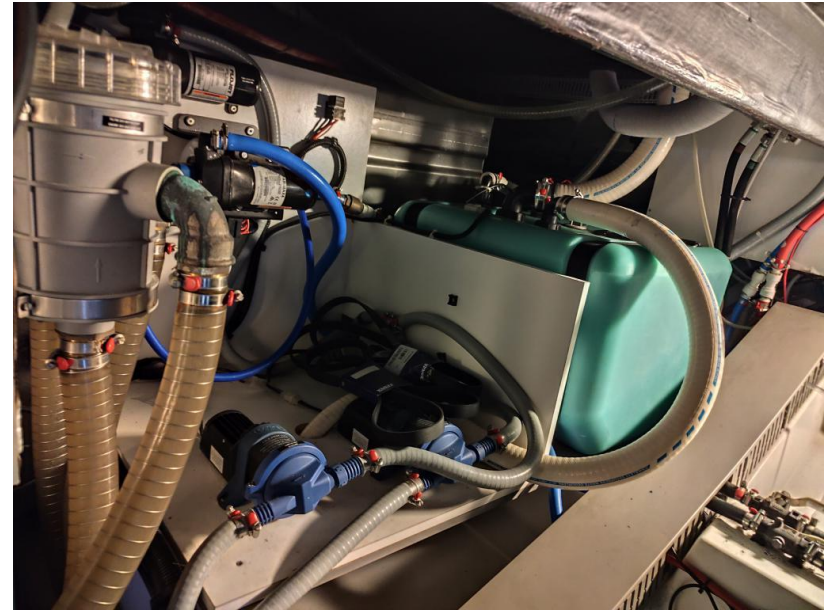












Technical specifications

1

Length overall	13,88 m
Hull Length	12,17 m
Beam	4,25 m
Air draft mini (folded mast)	3,88 m
Air draft maxi (unfolded mast)	7,74 m
Draft	1,05 m
Light displacement	10895 kg
Fully laden displacement (cat. B)	15230 kg
Fully laden displacement (cat. C)	15400 kg
Manufacturer's maximum recommended load (cat. B)	4360 kg
Manufacturer's maximum recommended load (cat. C)	4530 kg
Fresh water capacity	2 x 320 l
Grey water capacity	8 l
Black water capacity	120 l
Fuel capacity	2 x 700 l
Refrigeration unit capacity	130 l/wheelhouse + 40 l/flying bridge
12 V BATTERY CAPACITY	
Domestic system	2 x 140 Ah
Engine system	4 x 50 Ah
Bow thruster	2 x 50 Ah
Stern thruster	2 x 50 Ah
Generator	1 x 110 Ah
Maximum engine power	2 x 300 CV
Design Category	B / C / D

CE CATEGORY	Maximum number of persons
A.....
B.....	12 persons
C.....	14 persons
D.....	16 persons



Bottom surface: approx. 45 m²

SWIFT TRAWLER
44

11